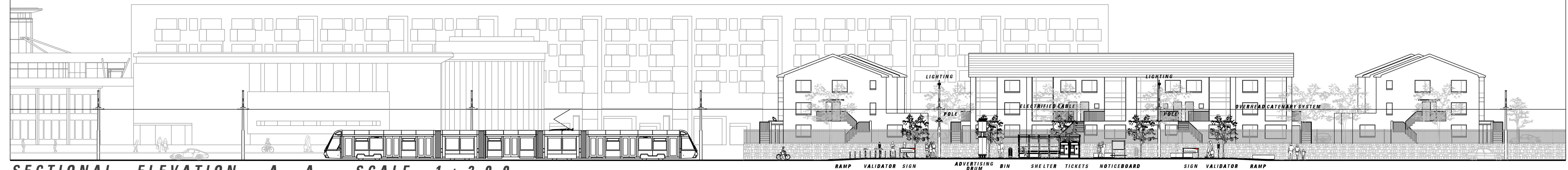
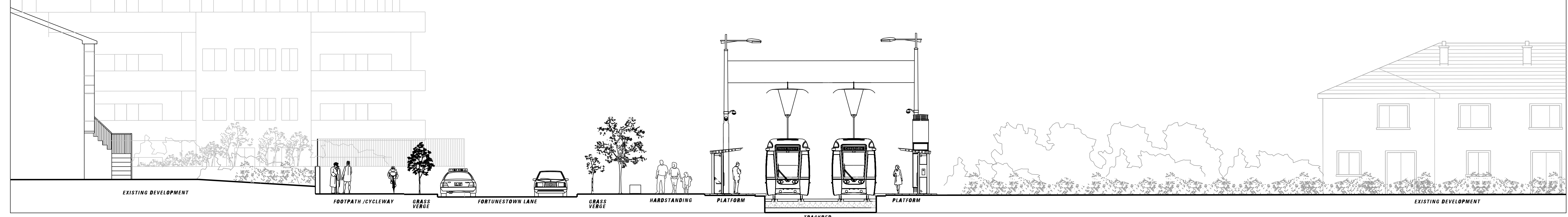


PROPOSED PLAN - SCALE 1 : 2 0 0



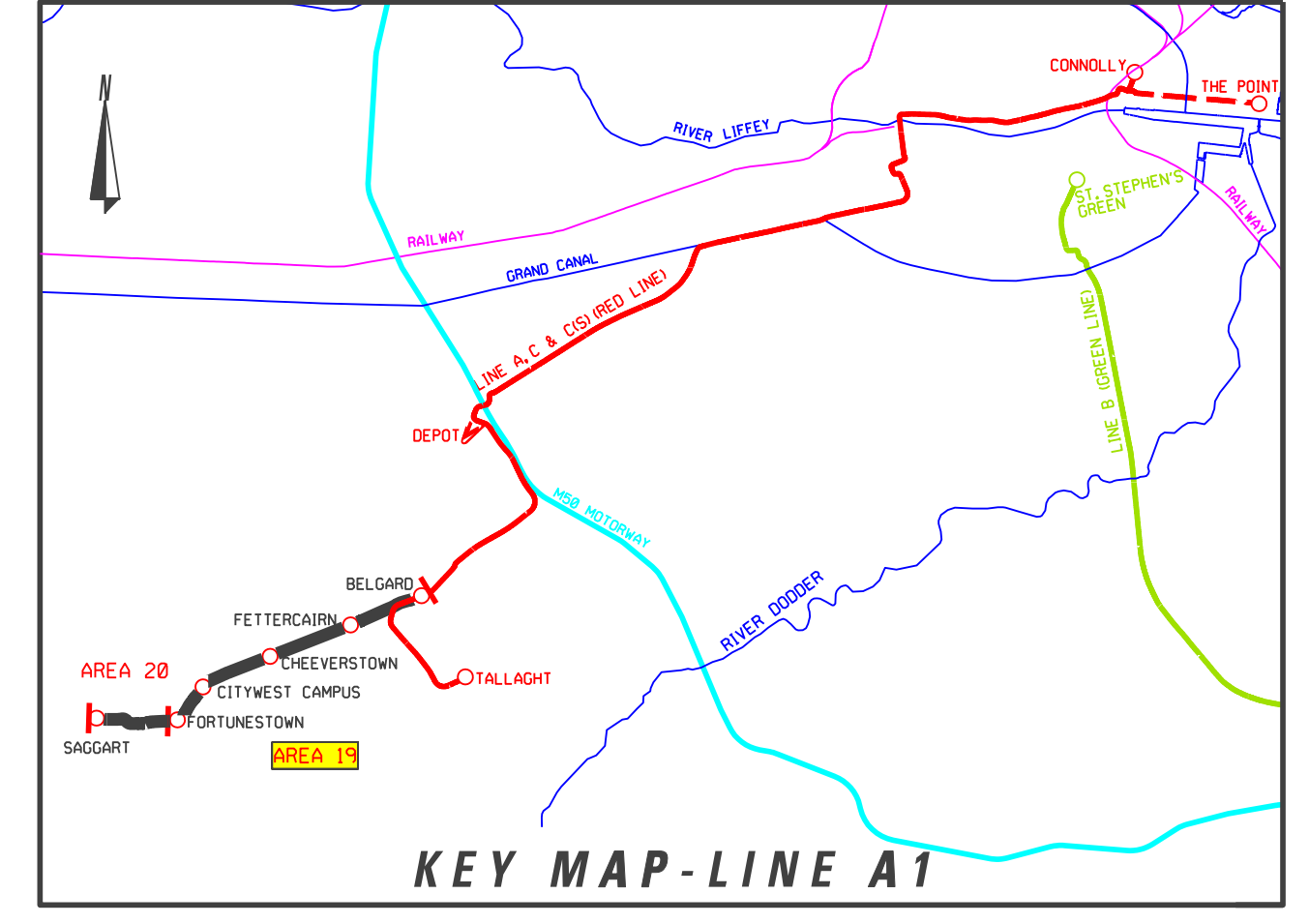
SECTIONAL ELEVATION A - A - SCALE 1 : 2 0 0



SECTION B - B - SCALE 1 : 1 0 0

**LEGEND**

- EXISTING TREE
- EXISTING TREE REMOVED
- NEW TREE
- PROPOSED EDGE PLANTING
- LOW LYING GROUND COVER
- RECONSTITUTED GRANITE SURFACE
- DETERENT SURFACE
- HODGIN SURFACE
- 600 X 600 PAVING SLABS
- EXISTING KERB REMOVED
- EXISTING BUILDING LINE
- STRUCTURES TO BE REMOVED
- SWEEP PATH EDGE
- POLE SUPPORT
- DIRECTION OF TRAFFIC FLOW



REVISION	DATE	MODIFICATION	STATUS	CHECKED/APPROVED

**RPA** Railway Procurement Agency

**LUAS**

TITLE: **LIGHT RAILWAY WORKS LINE A1 - STRUCTURES FORTONESTOWN STOP**

PREPARED: RPA OFFICE	CHECKED: DEREK TIERNEY
SCALE: 1:200 1:1000	APPROVED: MICHAEL SHEEDY
DATE: NOVEMBER 2007	

AREA NO. <b>19</b>	PLAN NO. <b>A1-ST 19 H-0</b>	SUBJECT: <b>RAIL ORDER</b>
--------------------	------------------------------	----------------------------

**NOTE:**  
FOR 1:500 PLAN DRAWING SEE RAIL ORDER PLAN NO. A1-RD 19 H-0 (LA1/000/GA/19011/A).

©Copyright Railway Procurement Agency  
This drawing is confidential and the copyright is it is owned by the RPA. This drawing must not be either loaned, copied or otherwise reproduced in whole or in part or used for any purpose without the prior permission of the RPA.  
All U.S. data used for plan is generated from U.S. digital data and is provided under Database Source permit no. 03-0027

INTERNAL DOCUMENT NUMBER	STAGE	LINE	CONTRACT	ELEMENT	DRW NO.	DRW REV.
	L	A1	000	TO	19005	A